

6 Colors | 5 Sizes | 3 Finishes

REACTION STONE PORCELAIN

NEMO
TILE + STONE



*V2 Variation | Matte, Polished,
& Bush-hammered Finish*

REACTION

The Reaction series is a stone look tile that has been designed for projects seeking simplicity and elegance. Its wide variety of formats makes it adaptable to all settings with a minimalist tonal series and three different textures: Natural, Lappato and Bush-Hammered. Its neutral colors and matte finish create very different settings that fit in any room. Reaction Terra is porcelain inspired by natural stone from the north of Italy (Ceppo di Gré). Its wide variety of formats makes it adaptable to all settings with a tonal series with a very minimalist style. Both are available in 4 sizes and a 2x2 mosaic.



Frost



Echo



Geo



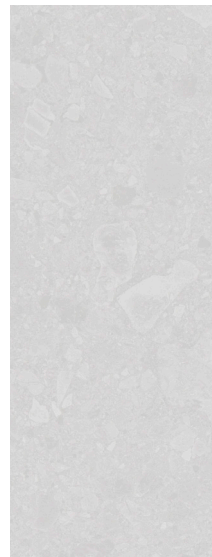
Haze



Shade



Pitch



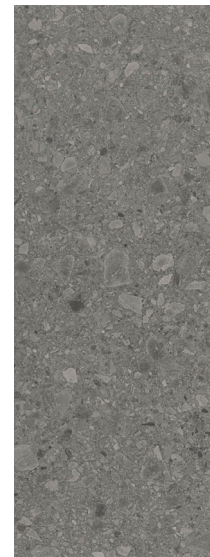
Frost Terra



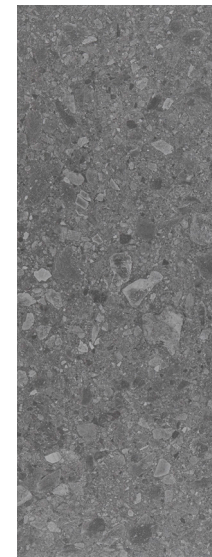
Echo Terra



Geo Terra



Haze Terra

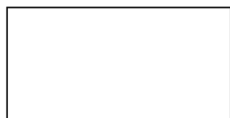


Shade Terra

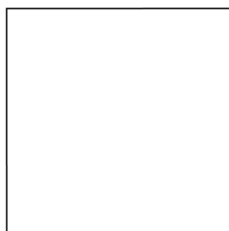


Pitch Terra

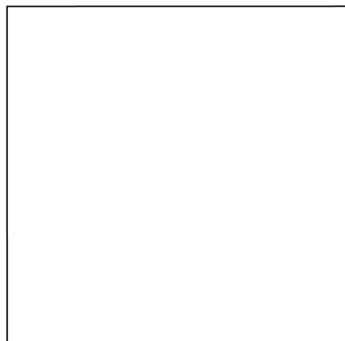
Size



12" x 24"



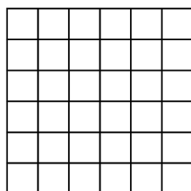
24" x 24"



36" x 36"



24" x 48"



2" x 2" on
12x12 Sheet

Technical Information

PROPERTY	STANDARD	RESULT	
Fabrication process	-	Dry pressed ceramic tile	
Absorption group	ISO 13006	Bla	
Shade variation	-	V2	
Facial dimension range & surface quality	ISO 10545-2	Compliant	
Water absorption	ISO 10545-3	E<0.5%	
Breaking Strength (S)	ISO 10545-4	>1300 N	
Flexural tensile strength (N/mm2)	ISO 10545-4	> 35 N/mm^2	
Lineal thermal expansion between 20 to 100 C	ISO 10545-8	Compliant	
Thermal shock resistance	ISO 10545-9	Compliant	
Crazing resistance	ISO 10545-11	Compliant	
Durability; Freeze - thaw cycle	ISO 10545-12	Compliant	
Resistance to chemicals and pool treatment products	ISO 10545-13	Compliant	
Resistance to high concentration acid and bases	ISO 10545-13	Min. GHB	
Resistance to low concentration acids and bases	ISO 10545-13	Min GLB	
Stain resistance	ISO 10545-14	Compliant	
Finish	-	<u>Reaction</u>	<u>Reaction Terra</u>
		Matte, Lappato, Bush-Hammered	Matte
Slip resistance		<u>Matte, Lappato</u>	<u>Bush-Hammered</u>
	UNE ENV 12633.2003	Class 2	Class 2
	DIN 51.130	R10	R11
	DIN 51.097	Class C	Class C
	DCOF - ANSI A137.1-2012	0.66	0.58
	BS 7976-2:2002 + A1:2013	Dry 61 (Low) Wet 44 (Low)	Dry 60 (Low) Wet 40 (Low)
	AS 4586-2013	P4 (Low)	P4 (Low)



NEMO
TILE + STONE

REACTION
STONE LOOK PORCELAIN