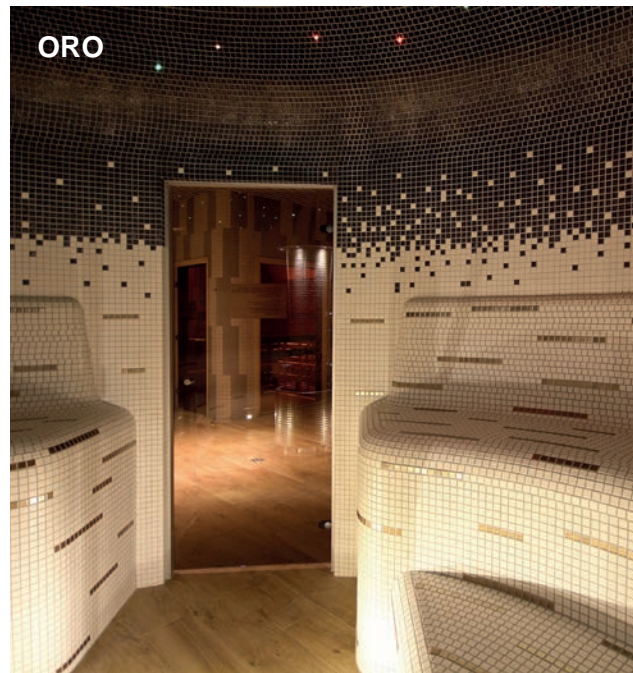


The image shows the interior of a circular spa or pool. The walls and floor are covered in a mosaic of small, light-colored tiles. A central column, also covered in mosaic, rises from the floor. The ceiling is a dark, curved surface with a grid of small, colorful lights (red, green, blue) that create a starry effect. The overall atmosphere is modern and luxurious.

9 Colors | 3 Sizes | 2 Finishes

METALLICA CERAMIC MOSAIC

NEMO
TILE + STONE



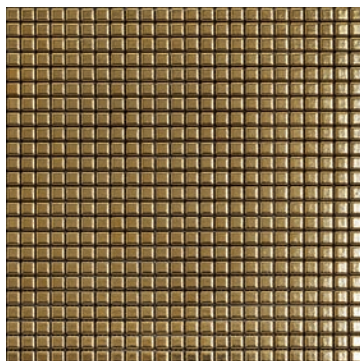
NEMO
TILE + STONE

METALLICA
METALLIC LOOK CERAMIC MOSAIC

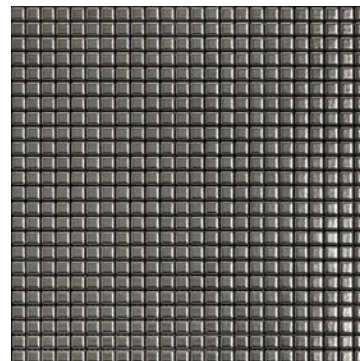
Matte and Metallic Finish

METALLICA

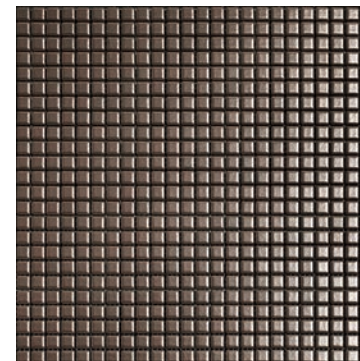
The Metallica line is a ceramic of single-press firing which has a characteristic metal finish with different shades. Metallica allows the realization of mosaic projects with distinguished light and reflection effects suitable for design of interiors and for covering of exterior facades. Metals such as Gold, Platinum, Bronze, Aluminum as well as others can be seen in this line as there are 10 colorways and comes in 3 sizes, 2"x4", 1"x1" & 1/2" x 1/2". These are mounted on a mesh backing for easy installation.



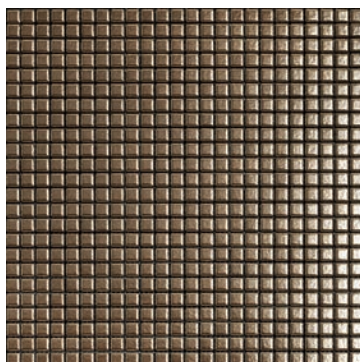
Oro



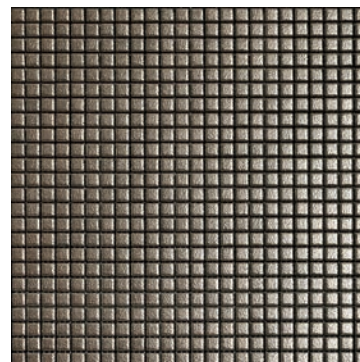
Platino



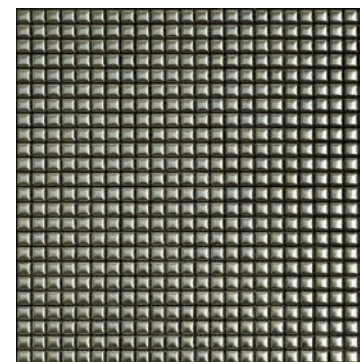
Cuprite



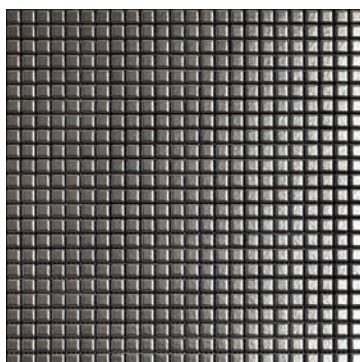
Bronzo



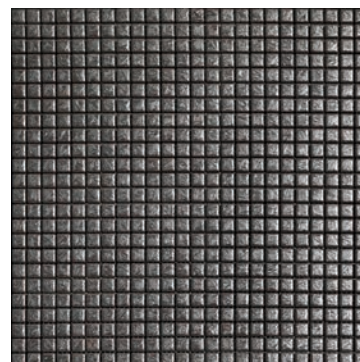
Pirite



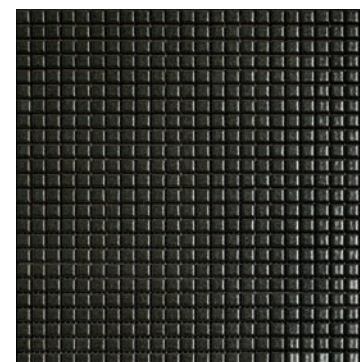
Acciaio



Alluminio

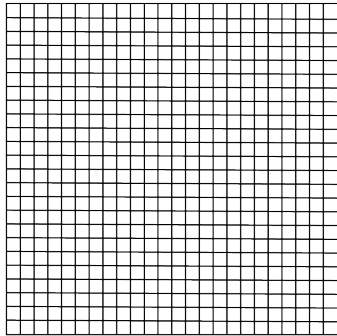


Cristalli

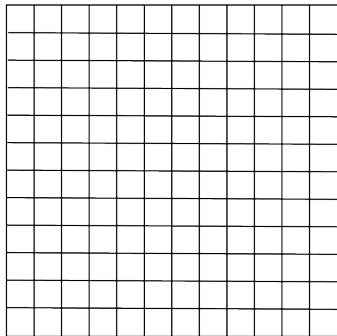


Riflessi

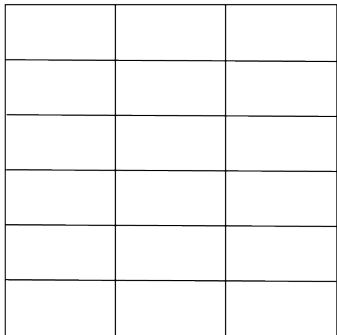
Sizes



.5"x.5" Mosaic on
12"x12" Sheet



1"x1" Mosaic on
12"x12" Sheet



2"x4" Mosaic on
12"x12" Sheet

Technical Information

SURFACE DIMENSIONS AND QUALITIES	STANDARD	TOLERANCES	RESULTS
NET MOUNTED / SIDES	ISO 10545-2	SIDES	± 0.2% ± 4%
SURFACE QUALITIES	ISO 10545-2	< 95%	< 95%
STRAIGHTNESS OF EDGES	ISO 10545-2	± 0.5%	± 0.4%
SQUARENESS	ISO 10545-2	± 0.6%	± 0.4%
FLATNESS	ISO 10545-2	± 0.5%	± 0.4%
PHYSICAL PROPERTIES		REQUIRED CONDITIONS	
WATER MASS ABSORBED IN %	ISO 10545-3 ASTM C373	0.5% < E ≤ 3% APPENDICE H	≤ 1%
BREAKING STRENGTH IN N BREAKING STRENGTH IN LBS.	ISO 10545-4 ASTM C648	700 MIN. APPENDICE H ≥ 250 LB	> 1800 > 250 LB
BENDING STRENGTH IN N/mm ²	ISO 10545-4	30 MIN. APPENDICE H	> 50 N/mm ²
IMPACT RESISTANCE	ISO 10545-5	TESTING METHOD AVAILABLE	> 0.6 (APPENDICE P)
ABRASION RESISTANCE	ISO 10545-7	INDICATED BY PRODUCER	SEE COLOR NOTES
COEFFICIENT OF LINEAR THERMAL EXPANSION	ISO 10545-8	TESTING METHOD AVAILABLE	< 7x10 ⁻⁶ /°C
THERMAL SHOCK RESISTANCE	ISO 10545-9 ASTM C484	TESTING METHOD AVAILABLE	GUARANTEED
MOISTURE EXPANSION	ISO 10545-10	TESTING METHOD AVAILABLE	< 0.04%
CRAZING RESISTANCE	ISO 10545-11 ASTM C424	REQUIRED	GUARANTEED
FROST RESISTANCE	ISO 10545-12 ASTM C1026	REQUIRED	GUARANTEED
COEFFICIENT OF FRICTION (SLIPPERINESS)	B.C.R.A.	> 0.40	
COEFFICIENT OF FRICTION	DIN 51130	INDICATED BY PRODUCER	ON REQUEST
COEFFICIENT OF FRICTION (INCLUDING INCLINE)	DIN 51097	INDICATED BY PRODUCER	
CHEMICAL PROPERTIES		REQUISITES	
RESISTANCE TO CHEMICAL PRODUCTS (HOUSEKEEPING AND SWIMMING POOL ADDITIVES)	ISO 10545-13	GB MIN.	GB MIN.
RESISTANCE TO DILUTED ACID AND ALKALI SOLUTIONS	ISO 10545-13	INDICATED BY PRODUCER	GLB MIN.
RESISTANCE TO HIGHLY CONCENTRATED ACID AND ALKALI SOLUTIONS	ISO 10545-13	TESTING METHOD AVAILABLE	ON REQUEST
STAIN RESISTANCE	ISO 10545-14 ASTM C1378	CLASS 3 MIN.REQUIRED	3 MIN. (APPENDICE P) GUARANTEED
LEAD AND CADMIUM RELEASED	ISO 10545-15	TESTING METHOD AVAILABLE	ON REQUEST
RESISTANCE OF COLOURS TO SUNLIGHT	DIN 51094	NOT PROVIDED	GUARANTEED
FIRE RESISTANCE		DECISION 96/603/CE	CLASS A1