

NEMO

ALLOY

This collection has been discontinued please contact your sales rep with any questions.



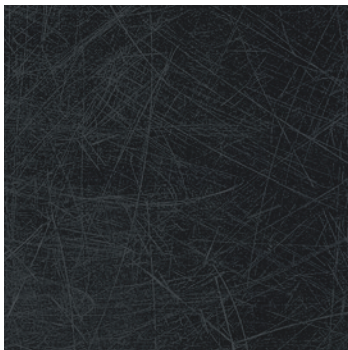




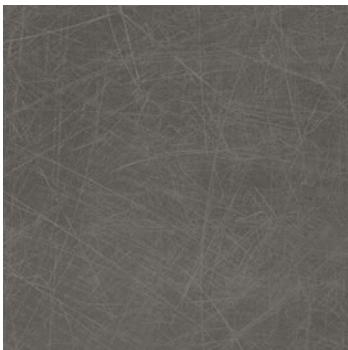
ALLOY COLORS



MOCHA



BLACK



GREY



WHITE



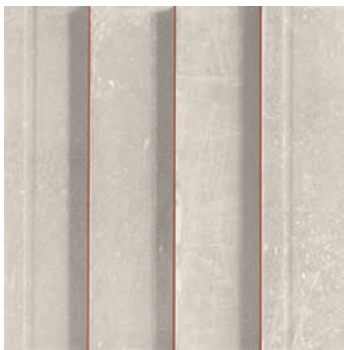
MOCHA MOSAICO
3D RIGHE



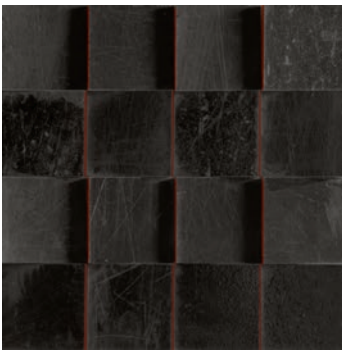
BLACK MOSAICO
3D RIGHE



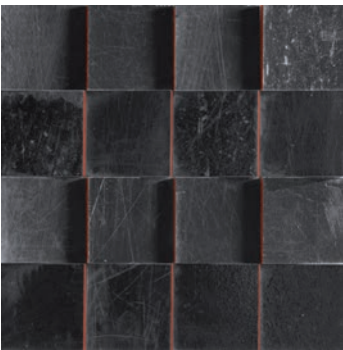
GREY MOSAICO
3D RIGHE



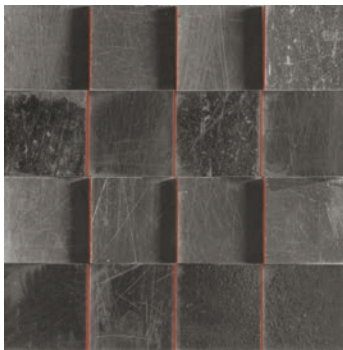
WHITE MOSAICO
3D RIGHE



MOCHA MOSAICO
3D QUADRI



BLACK MOSAICO
3D QUADRI



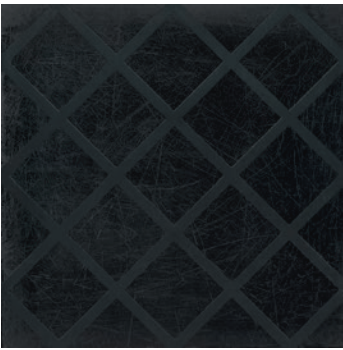
GREY MOSAICO
3D QUADRI



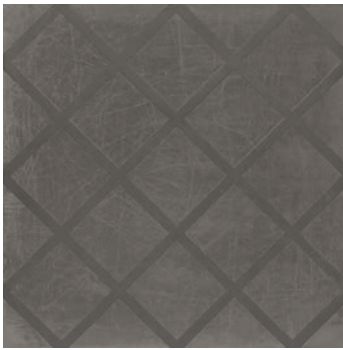
WHITE MOSAICO
3D QUADRI



MOCHA GRID



BLACK GRID

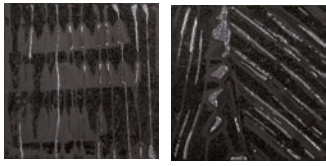


GREY GRID

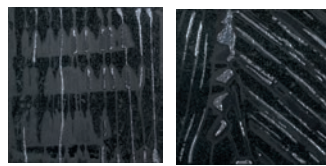


WHITE GRID

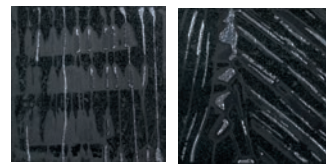
ALLOY SIZES



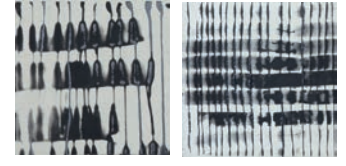
MOCHA RAKU



BLACK RAKU



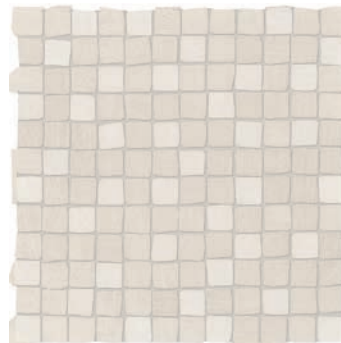
GREY RAKU



WHITE RAKU

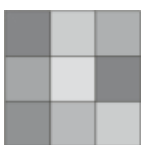


BLACK MOSAICO
CIOTOLO



WHITE MOSAICO
CIOTOLO

* MOSAICO 5x5 CM AVAILABLE IN ALL COLORS

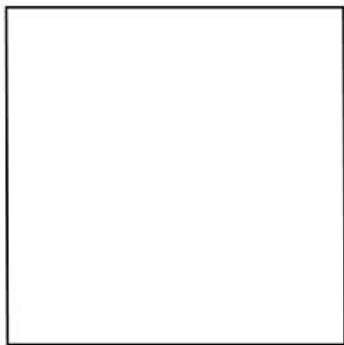


V3

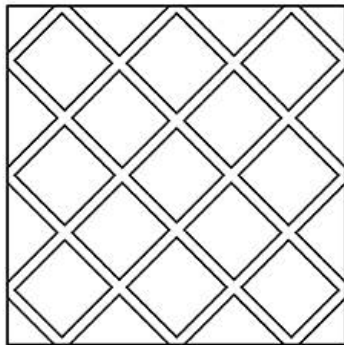
Moderate Variation

*This collection has been discontinued please contact your sales rep with any questions.

ALLOY



32" x 32"



32" x 32" Grid



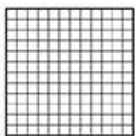
24" x 24"



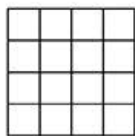
12" x 24"



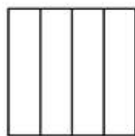
Raku 8" x 8"



Ciotolo
Mosaic



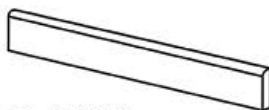
3D Quadri
Mosaic



3D Righe
Mosaic



2" x 32" Bullnose



3" x 24" Bullnose



12" x 48" Step



12" x 48" Corner Step

ALLOY DRY - PRESSED CERAMIC TILES ISO 13006 ANNEX G - UNI EN 14411 ANNEX G - Bla GL

TECHNICAL FEATURES		STANDARD	VALUE
	FLATNESS	UNI EN ISO 10545/2	$\pm 0,26\%$ / $\pm 1,5$ mm
		ASTM C485 WARPAGE	-
		CALIBRATED $\pm 0,75\%$ (MAX $\pm 0,09$ IN)	-
		RECTIFIED $\pm 0,40\%$ (MAX $\pm 0,05$ IN-SIZE ≤ 60 cm) (MAX $\pm 0,07$ IN-SIZE > 60 cm)	$\pm 0,25\%$ (MAX $\pm 0,05$ IN-SIZE ≤ 60 cm) (MAX $\pm 0,07$ IN-SIZE > 60 cm)
	WATER ABSORPTION (AVERAGE VALUE EXPRESSED IN %)	UNI EN ISO 10545/3 $\leq 0,5\%$	COMPLIANT
		ASTM C373	COMPLIANT
	MODULUS OF RUPTURE BREAKING STRENGTH	UNI EN ISO 10545/4	≥ 50 N/mm ²
		ASTM C648	700 Lbs
	FROST RESISTANCE	UNI EN ISO 10545/12	COMPLIANT
		ASTM C1026	UNAFFECTED
	CHEMICAL RESISTANCE TO HIGH AND LOW ACID AND BASIC CONCENTRATIONS	UNI EN ISO 10545/13	GA - GLA - GHA
		ASTM C-650	UNAFFECTED
	STAIN RESISTANCE	UNI EN ISO 10545/14	5
		CTI 81-7D	NO EVIDENT VARIATION
	SLIP RESISTANCE		NATURALE
		DIN 51130	R9
		DIN 51097	-
		ANSI A 137.1- 2012 DCOF (SECTION 9.6)	WET $\geq 0,42$
		B.C.R.A	$\geq 0,40$

For further information on technical specifications, please consult our up-dated general catalogue.



Item	Size (cm)	Thickness (mm)	Pieces x Box	St/Ctn	Lbs/Ctn	Boxes x Pal.	St/Pal	Lbs/Pal
983J_R	60X120	10	2	15,50	77,00	22	341,00	1694
803J_R	80X80	10	2	13,77	70,00	40	550,80	2816
603J_R	60X60	10	3	11,62	54,00	40	464,80	2160
633J_R	30X60	10	6	11,62	54,00	40	464,80	2160
D303J_Righe	29X29	10	5	4,53	23,00	-	-	-
T303J_Quadri	29X29	10	5	4,53	23,00	-	-	-
I303J_Ciotolo	30X30	10	5	4,84	22,00	-	-	-
803J_RB Grid	80X80	10	2	13,22	70,00	-	-	-
633J_RD Glassa	30X60	10	2	3,87	18,00	-	-	-
023J_RC Raku	20X20	10	18	7,75	37,00	-	-	-



 **NEMO**
NEMOTILE.COM
ALLOY