

 **NEMO**  
NEMOTILE.COM

**AURORA**



AURORA



AURORA

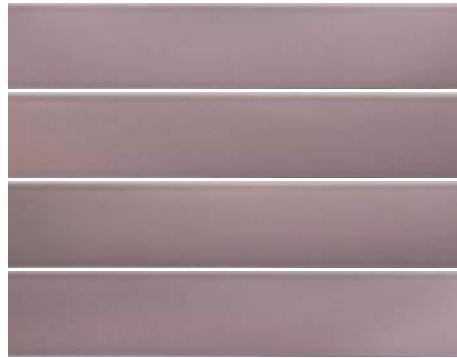


# AURORA COLORS

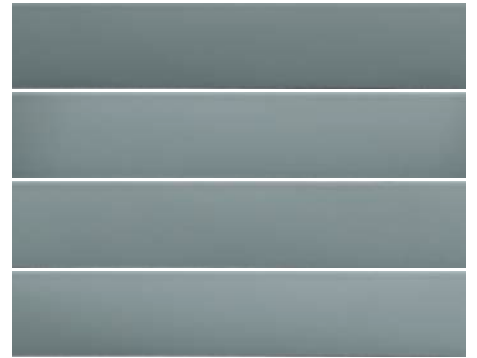
PORCELAIN TILE



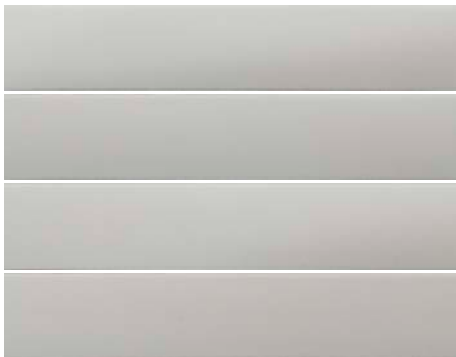
POLAR



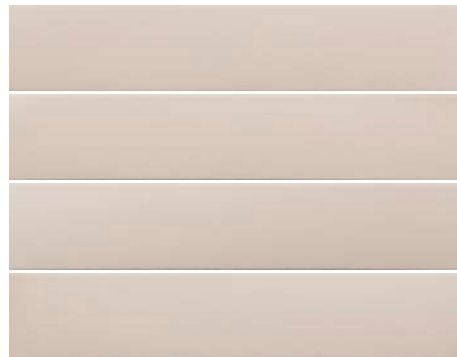
COSMOS



ATOMIC



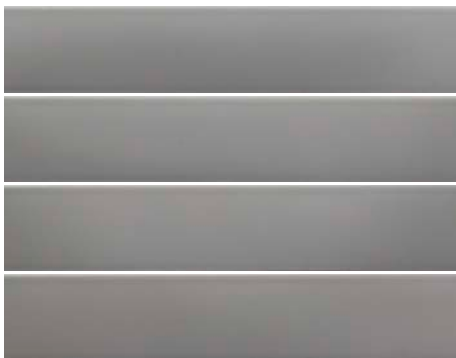
MERCURY



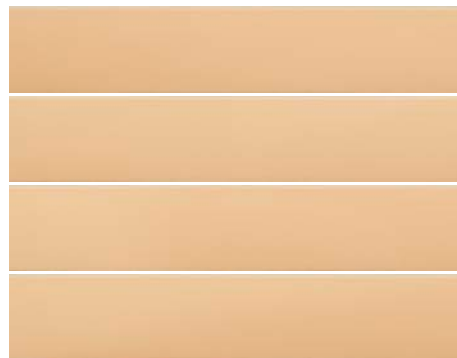
FAWN



CELESTINE



METEOR



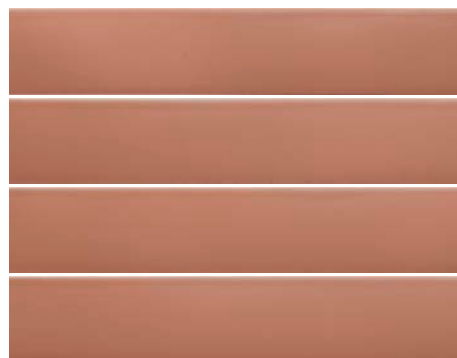
JASMINE



SAPPHIRE



CARBON



SOLAR FLARE

AURORA



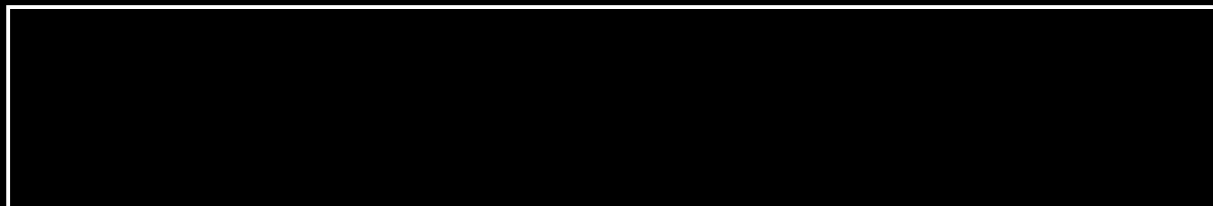
## TECHNICAL FEATURES

glazed porcelain

		standard	required standards	
dimensions	length and width	UNI-EN ISO 10545-2±	0.6%	compliant
	thickness	UNI-EN ISO 10545-2	± 5%	compliant
	straightness of sides	UNI-EN ISO 10545-2	± 0.5%	compliant
	rectangularity	UNI-EN ISO 10545-2	± 0.5%	compliant
	surface flatness – centre curvature	UNI-EN ISO 105452	--	
	surface flatness – edge curvature	UNI-EN ISO 105452	--	
	surface flatness – warpage	UNI-EN ISO 10545-2	± 0.5%	compliant
bending strenght	breaking of rupture	UNI-EN ISO 105454	> 1300 N (≥ 7,5 MM) > 700 N (< 7,5 MM)	compliant
	modulus of rupture	UNI-EN ISO 105454>	35 N/MM²(≥ 7,5 MM)	compliant
	resistance to abrasion of glazed tiles	UNI-EN ISO 105457	-	class 3 light colors class 2 dark colors
	water absorption	UNI-EN ISO 105453	≤ 0,5 %	compliant
	colour resistance to light	DIN 51094-		resistant
	linear thermal expansion coefficient (100° C)	UNI-EN ISO 105458	test method available	test method available
	thermal shock resistance	UNI-EN ISO 105459-		resistant
	frost resistance	UNI-EN ISO 10545-12	-	resistant
	crazing resistance	UNI-EN ISO 10545-11	-	resistant
	resistance to stains	UNI-EN ISO 10545-14	CLASSE 3 MIN.	Class 5
	chemical resistance	UNI-EN ISO 10545-13	GB MIN.	guaranteed (GA GLA GHA)
	lead and cadmium given off	UNI-EN ISO 10545-15	test method available	test method available
	reaction to fire	EN 13501-1	-	A <sub>1-FL</sub> -A1
	slip resistance (ramp test)	DIN 51130-		R9
	slip resistance (pendulum test)	BS 7976-2	-	37 WET
	slip resistance (pendulum test)	AS/NZS 4588-		P3
	wet dynamic coefficient of friction (DCOF)	ANSI A137.1 - BOT 3000	≥ 0.42	compliant
	shade variations	--		V3

# AURORA

## SIZE



2.4 x 14.5



**JOLLY 0.5"x14.5"**

\*Available In

Polar

Mercury

Meteor

Carbon

Solar Flare

Sapphire



 **NEMO**  
NEMOTILE.COM  
**AURORA**