

NEMO
TILE + STONE
OPUS 2.0



OPUS 2.0



OPUS 2.0



OPUS 2.0

PORCELAIN WALL TILE

COLORS



SALT



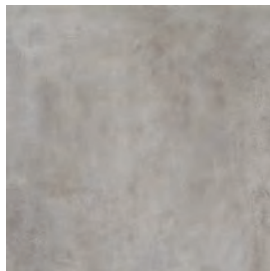
SAND



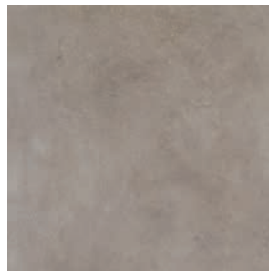
GRAVEL



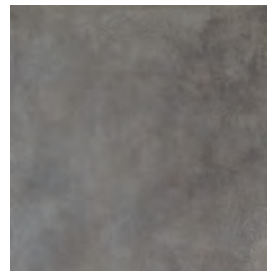
CLAY



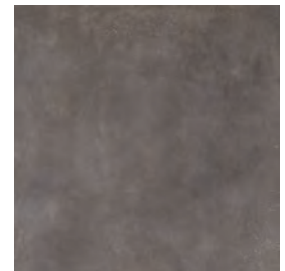
ASH



FLINT



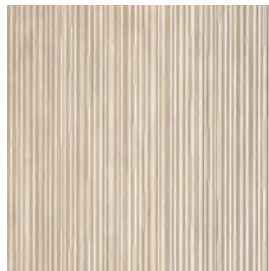
GRAPHITE



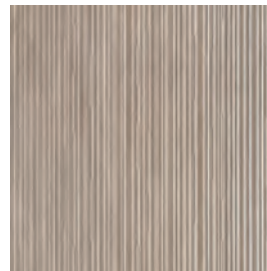
CARBON



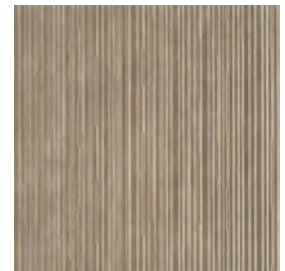
SALT FAULT



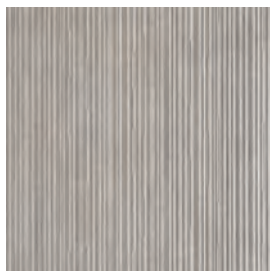
SAND FAULT



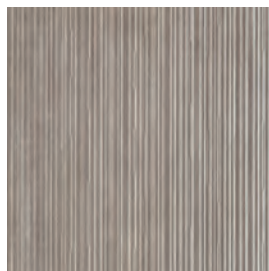
GRAVEL FAULT



CLAY FAULT



ASH FAULT



FLINT FAULT



GRAPHITE FAULT



CARBON FAULT



MIX WARM



MIX COLD

*FAULT AND MIX ONLY AVAILABLE IN 24X48

OPUS 2.0



OPUS 2.0

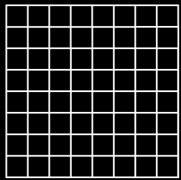
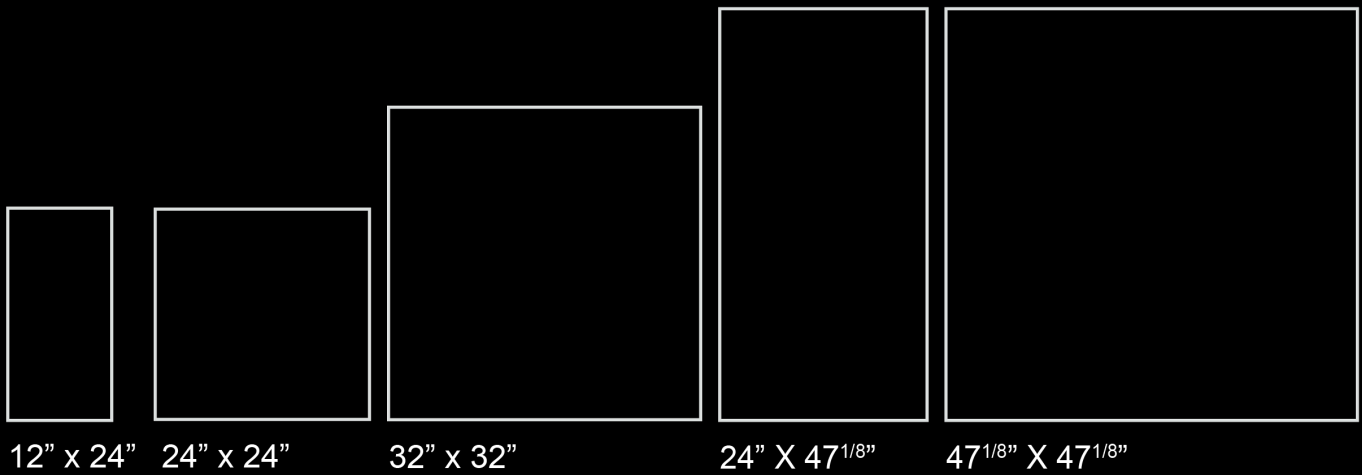
TECHNICAL FEATURES

Type	Porcelain
Stain Resistance	Resistant
Water Absorption	In Accordance
DCOF	>0.42
Frost Resistant	Resistant
Chemical Resistance	Resistant
Thickness	9.5, 20.0, 9.0 mm

SIZE/COLOR GUIDE

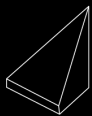
	12"x24"	24"x24"	32"x32"	24"x47 1/8"	47 1/8"x47 1/8"
Salt	Nat	Nat Anti Slip	Nat	Nat	Nat
Sand	Nat	Nat Anti Slip		Nat	
Gravel	Nat	Nat Anti Slip Grip	Nat	Nat	Nat
Clay	Nat	Nat		Nat	
Ash	Nat	Nat Anti Slip Grip	Nat	Nat	Nat
Flint	Nat	Nat		Nat	
Graphite	Nat	Nat Anti Slip	Nat	Nat	Nat
Carbon	Nat	Nat		Nat	

SIZE

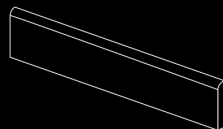


2"x2" Matte Mosaic

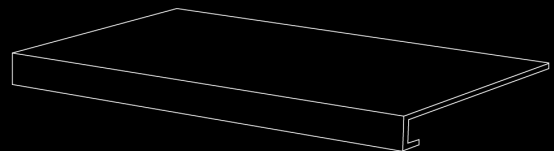
Trim



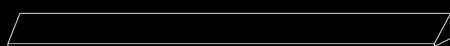
5/8" x 5/8"
Unghia Jolly



1³/₄" x 24"
Battiscopa



12" X 47¹/₈" Gradino Costa Retta



5/8" x 47¹/₈" Bacchetta Jolly



NEMO
TILE + STONE
OPUS 2.0