

12 Colors | 1 Size | 2 Finishes

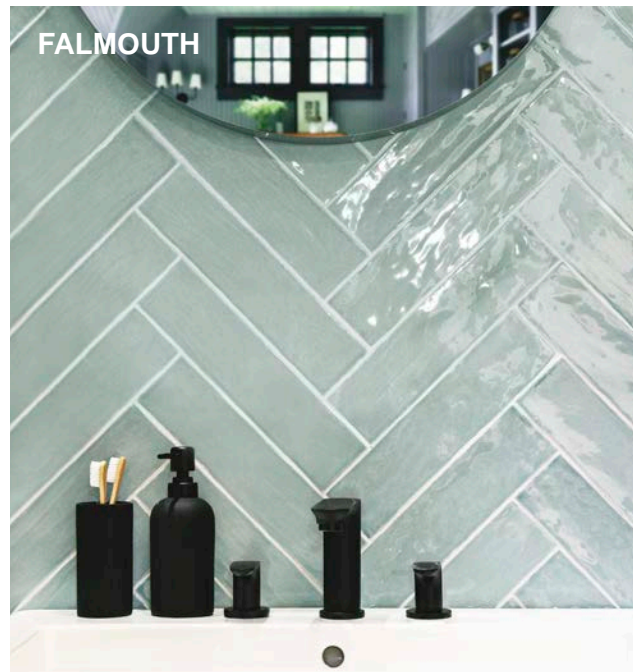
CAPE COD HANDMADE CERAMIC



NEMO
TILE + STONE



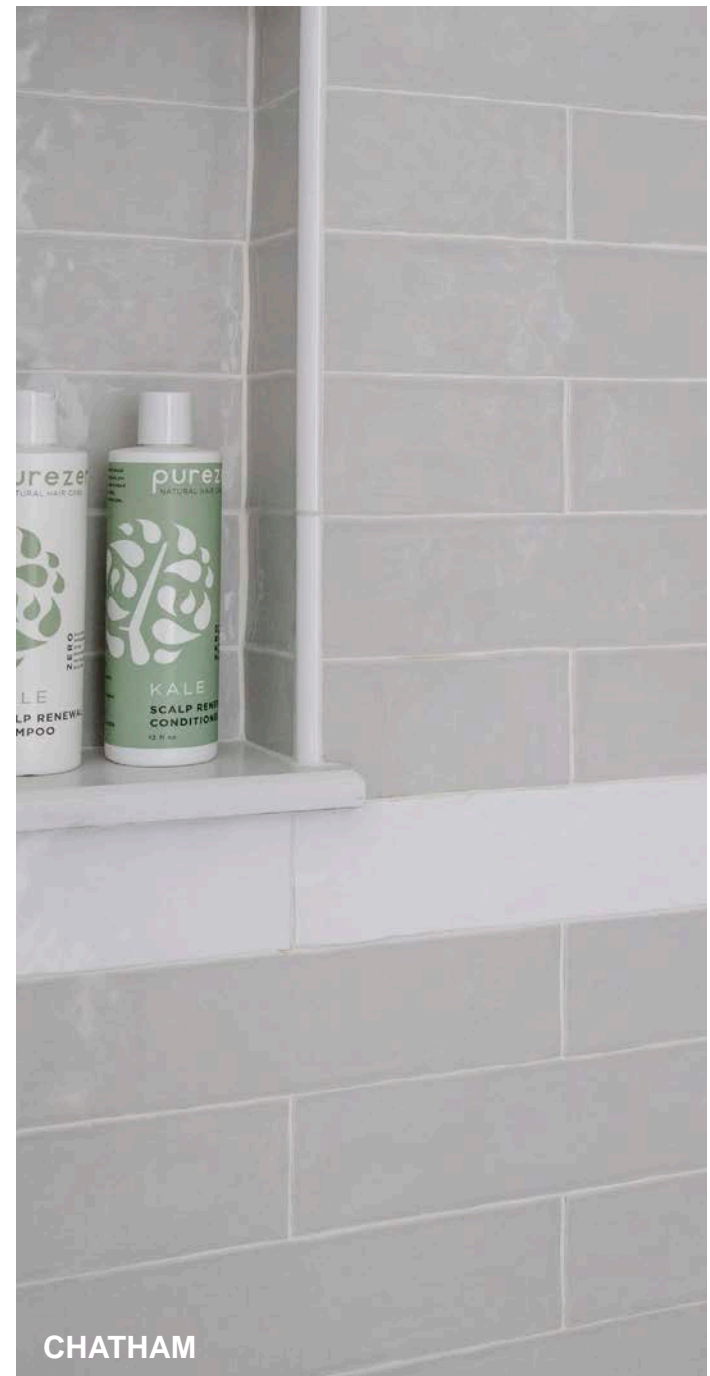
EASTHAM



FALMOUTH



YARMOUTH | EASTHAM

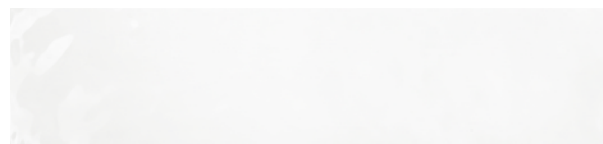


CHATHAM

V1 Variation | Glossy Finish

CAPE COD

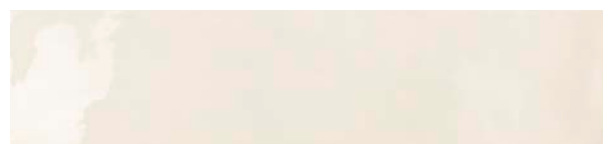
The Cape Cod Series draws inspiration from classic handmade ceramic subway tile, an irregular edge and a natural undulated surface convey a true artisan feel. The soft water color glaze is a perfect compliment to any kitchen decor.



Eastham



Osterville



Barnstable



Orleans



Wellfleet



Truro



Chatham



Hyannis



Yarmouth



Harwich



Falmouth



Bourne



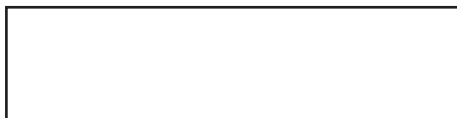
Technical Information

Finish	Glossy, matte	Application	Interior wall
Thickness	9mm	Tile body	White body glazed
Water absorption	>10%	Frost resistant	Not guaranteed
Chemical resistant	Guaranteed	Shade Variation	V1
Rectified	No		

Packing Information

SIZE	PCS/Box	Sq.Ft/Box	Boxes/Pallet	Sq.Ft/Pallet	Lbs/Sq.Ft
3x12	20	4.84	144	697.5	3.17

Size



3x12



Terminale Crayon Muscari
TER/CRA.MU 3,5x30 1.4"x12"



Angolo Est. Terminale Crayon Muscari
SGT/CRA.MU 2x3,5 0.8"x1.4"



Angolo Specchio Terminale Crayon Muscari
AST/CRA.MU 3,5x3,5 1.5"x1.5"



Matita Crayon Muscari
MAT/CRA.MU 1,5x30 0.6"x12"



Sguscio Matita Crayon Muscari
SGM/CRA.MU 1,5x1,5 0.6"x0.6"



Quarter Round Crayon Muscari
QR/CRA.MU 3x30 1.2"x12"



Ang. Quarter Round Crayon Muscari
AQ/CRA.MU 3x3 1.2"x1.2"



Profilo Jolly Crayon Muscari
PJ/C.MU 1,3x30 0.4"x12"



Ang. Profilo Jolly Crayon Muscari
AP/C.MU 1,3x1,3 0.4"x0.4"

