

 **NEMO**

CASABLANCA 2.0



CASABLANCA 2.0



CASABLANCA 2.0



CASABLANCA 2.0 PORCELAIN WALL & FLOOR TILE



WIND



SAHARA



SMOKE



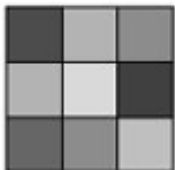
NIGHT



PALM



RIVER



V3 Variation: The product has deliberately moderate variation in the shading, resulting from the original grain or veining of the natural materials, or produced to suggest vintage effects, an aged look or a particular texture.

*Single tile image is representative of one color swatch from a variant group

CASABLANCA 2.0



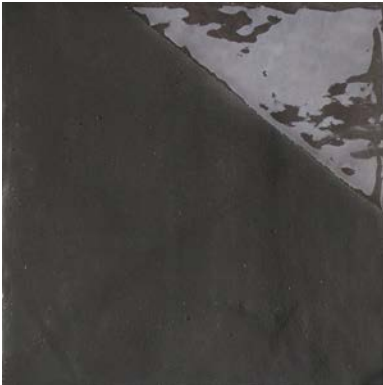
WIND HATCH



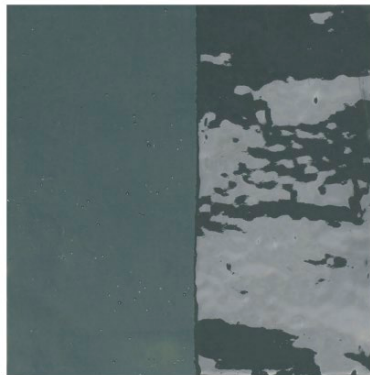
SAHARA HATCH



SMOKE HATCH



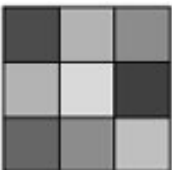
NIGHT HATCH



PALM HATCH



RIVER HATCH



V3 Variation: The product has deliberately moderate variation in the shading, resulting from the original grain or veining of the natural materials, or produced to suggest vintage effects, an aged look or a particular texture.

*Single tile image is representative of one color swatch from a variant group

CASABLANCA 2.0



TIARÉ

OUD

AURORA

CASABLANCA 2.0



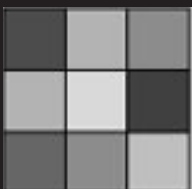
5½" x 5½"

FIELD TILE SIZES & FINISHES

Nominal (in)	Actual (cm)	Thickness (in)	Finish
5½" x 5½" Square	13.8 x 13.8	3/8	Matte

CASABLANCA 2.0 / PORCELAIN TILES / GROUP: Bla

TECHNICAL FEATURE	EUROPEAN NORM	VALUE
SIZE, THICKNESS, SIDE STRAIGHTNESS, FLATNESS, ORTHOGONALITY	UNE - EN - 14411	ACCOMPLISHES ALL REQUIREMENTS
WATER ABSORPTION CAPACITY	EN ISO 10545 - 03	> 0.5%
FLEXION RESISTANCE	EN ISO 10545 - 04	> 15 N/mm ²
RESISTANCE TO THE ABRASION, METHOD PEI	EN ISO 10545 - 07	IV
THERMAL SHOCK RESISTANCE	EN ISO 10545 - 09	CONFORMS
CRACKING RESISTANCE	EN ISO 10545 -11	CONFORMS
FROST RESISTANCE	EN ISO 10545 - 12	CONFORMS
RESISTANCE TO ACIDS (LOW AND HIGH CONCENTRATIONS)	EN ISO 10545 - 13	GLA / GHA
RESISTANCE TO ALKALIS	EN ISO 10545 - 13	GLA / GHA
RESISTANCE TO CLEANING PRODUCTS	EN ISO 10545 - 13	GA
RESISTANCE TO CHEMICAL PRODUCTS TO SWIMMING POOL WATER	EN ISO 10545 - 13	GA
STAINS RESISTANCE	EN ISO 10545 - 14	5
SLIP RESISTANCE (RD)	ENV12633	CLASS 3
SLIP RESISTANCE (S)	DIN 51130	R10
SLIP RESISTANCE (DCOF)	ANSI A137.1	> 0.60



V3 Variation: The product has deliberately moderate variation in the shading, resulting from the original grain or veining of the natural materials, or produced to suggest vintage effects, an aged look or a particular texture.

*Single tile image is representative of one color swatch from a variant group



NEMO

NEMOTILE.COM

CASABLANCA 2.0