

 **NEMO**

IMPRINT



IMPRINT



IMPRINT



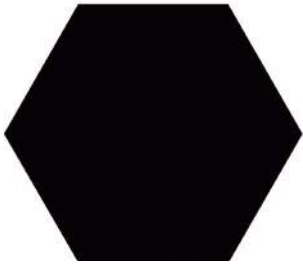
IMPRINT

PORCELAIN WALL TILE

HEXAGON

FONDI 3D 4"x5"

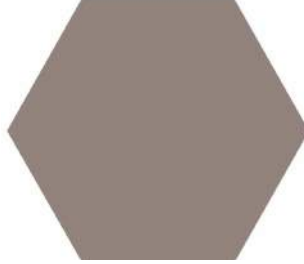
Comes with 3 different tile depths (7MM, 10MM, 13MM) in each carton for staggered 3D effect.



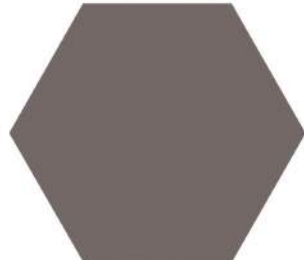
BLACK



IVORY



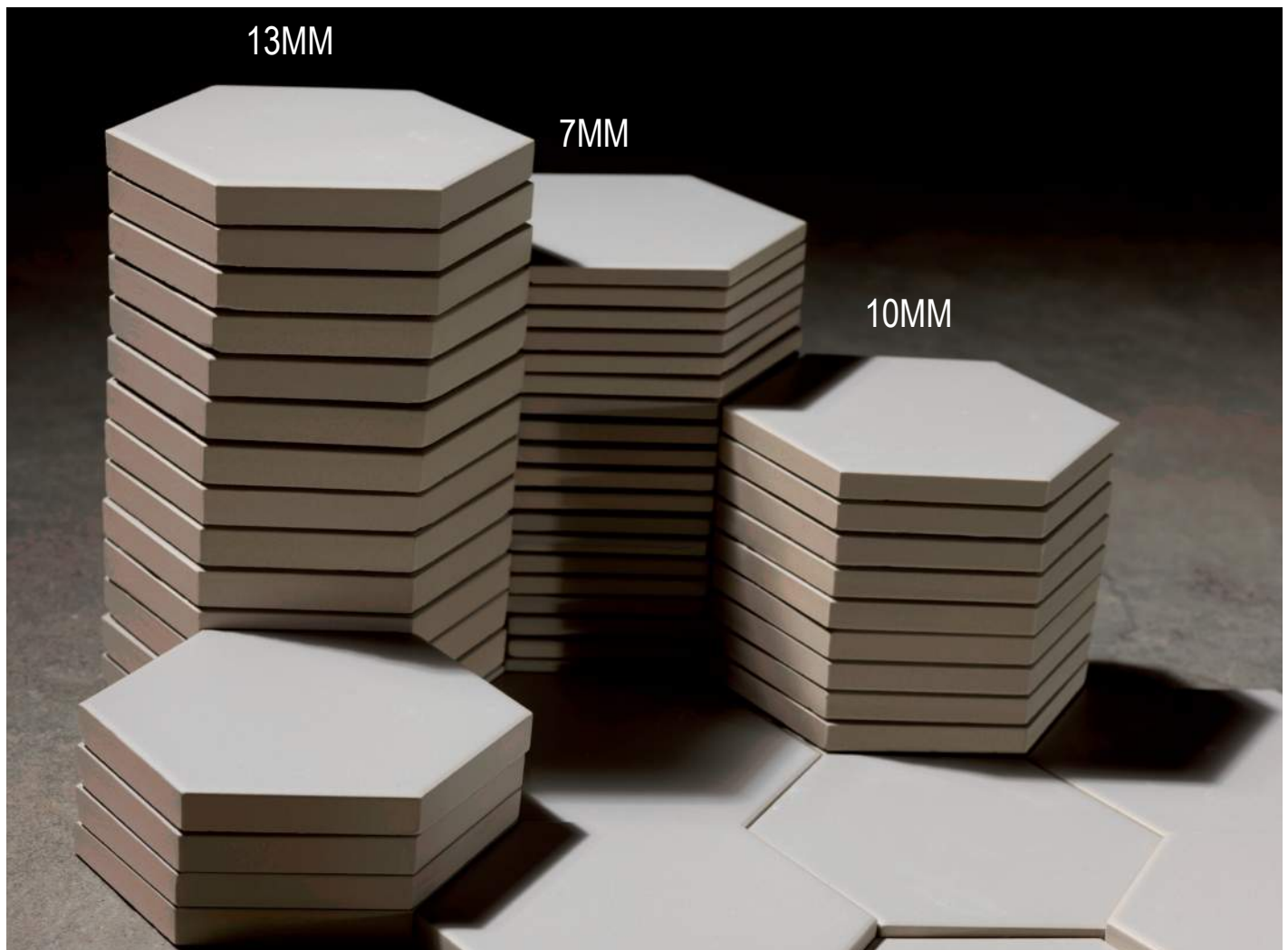
FANGO



CORDA



WHITE GLOSSY

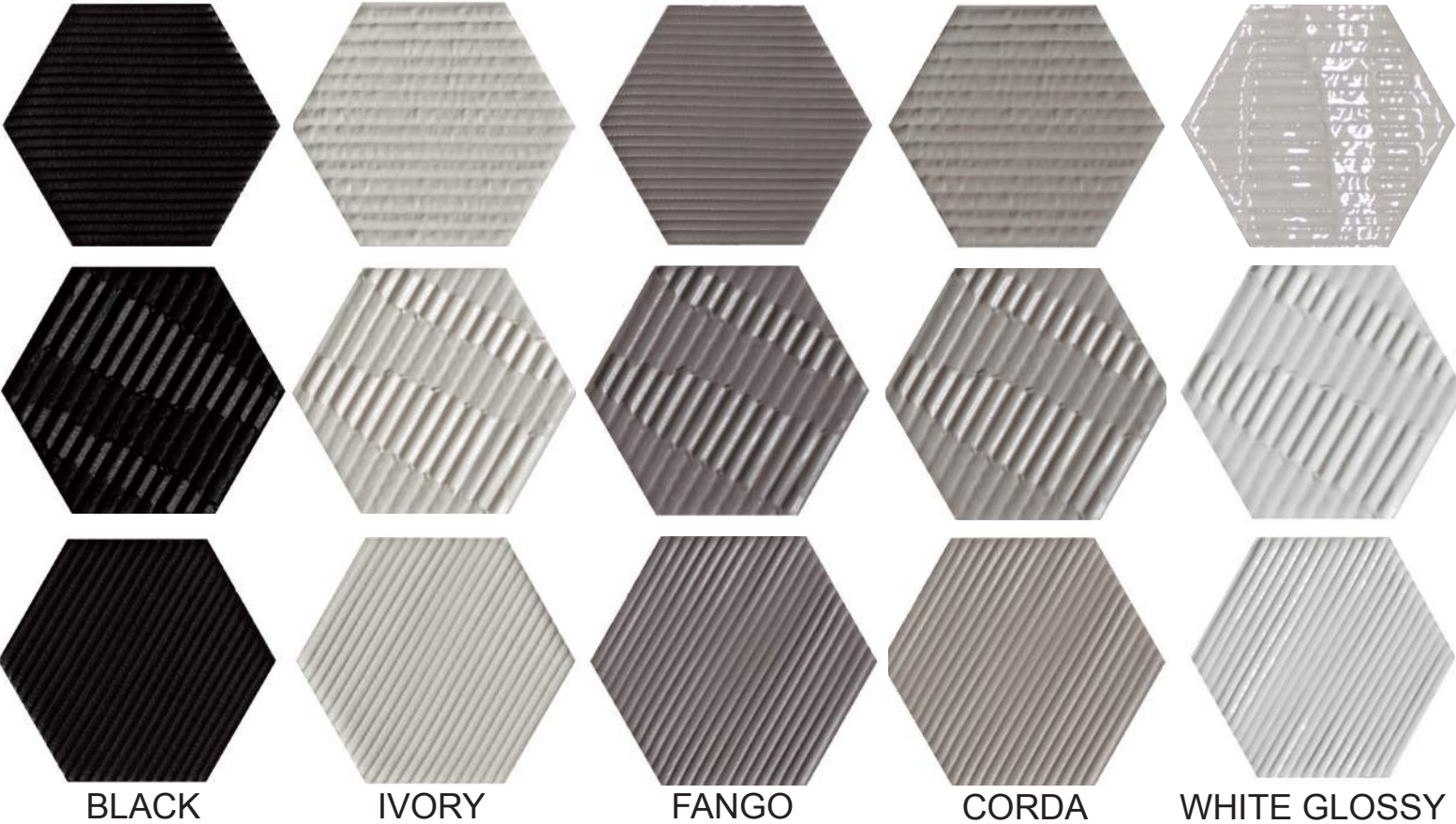


IMPRINT

HEXAGON

CARTON 4"x5"

Comes with 3 different imprinted textures mixed in each carton. Depth on all is 10mm.



ARBRE 4"x5"

An accent piece with an imprint resembling the center cut of a tree trunk. Depth on all is 10mm.



IMPRINT

PORCELAIN WALL TILE

MURETTO

FONDI 3D 2" x 9"

Comes with 3 different tile depths (7MM, 10MM, 13MM) in each carton for staggered 3D effect



IVORY



CORDA



FANGO



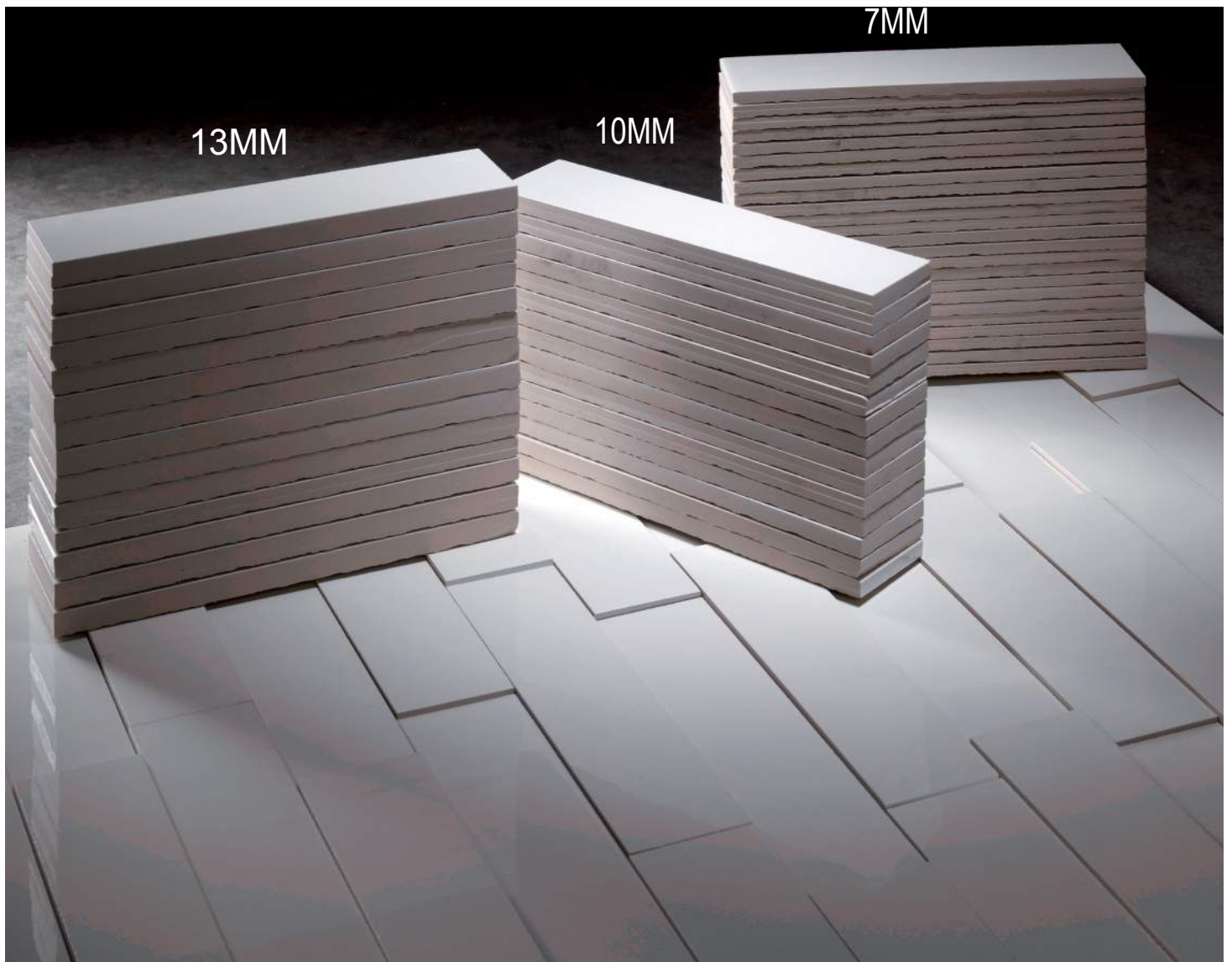
BLACK



WHITE



WHITE GLOSSY



IMPRINT

MURETTO

CARTON 2"x 9"

A ribbed texture made up of horizontal cords. One design, 6 colorways, depth on all is 10mm.



IVORY



CORDA



FANGO



BLACK



WHITE



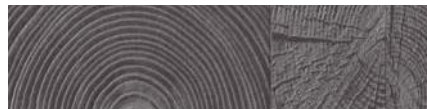
WHITE GLOSSY

ARBRE 2" x 9"

An accent piece with an imprint resembling the center cut of a tree trunk. One design, 3 colorways, depth on all is 10mm.



IVORY



GREY



BLACK

BATIK 2" x 9"

An accent piece with organic vertical lines with a metallic finish. Comes in one design, one color and is 10mm in depth.



BATIK MOKA

TECHNICAL FEATURES

UNI EN IS) 1441 Bla GL		Value
Water Absorption	ISO 10545.3	< 0.5%
Bending Strength	ISO 10545.4	Conforms
Chemical Resistance	ISO 10545.13	A
Stain Resistance	ISO 10545.14	5
Anti-Slip Index	DCOF ANSI A 137.1 : 2012	Arbe Carbon: > 0.42 Wet Arbe Carbon: > 0.42 Wet
Frost Resistance	ISO 10545.12	Frost Proof

PACKAGING

Packaging	SF / CTN	Pcs / CTN	Lbs / CTN	SF / PAL	CTNS / PAL	Lbs / PAL
Muretto 3D 5.8x23.8 cm	6.33	42	28	310.17	49	1372
Muretto 5.8x23.8 cm	6.33	42	28	310.17	49	1372
Hexagon 3D 11x12.6 cm	4.92	44	21	236.16	48	1008
Hexagon 11x12.6 cm	4.92	44	21	236.16	48	1008



IMPRINT