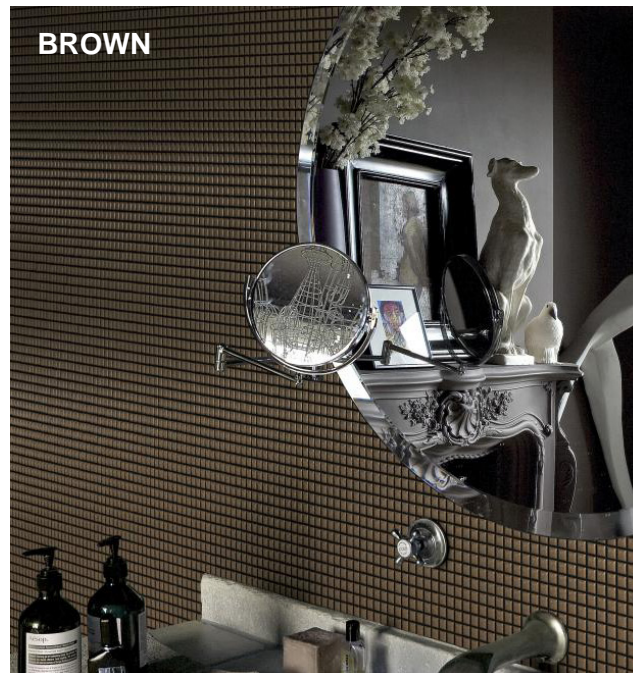
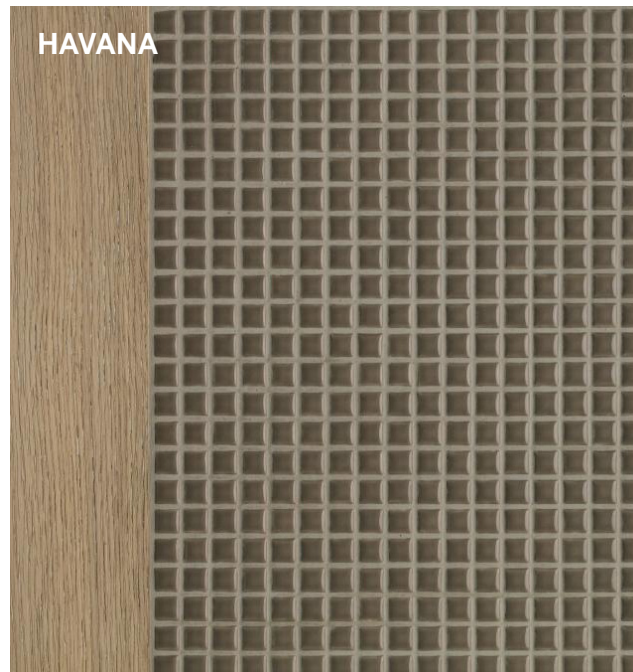
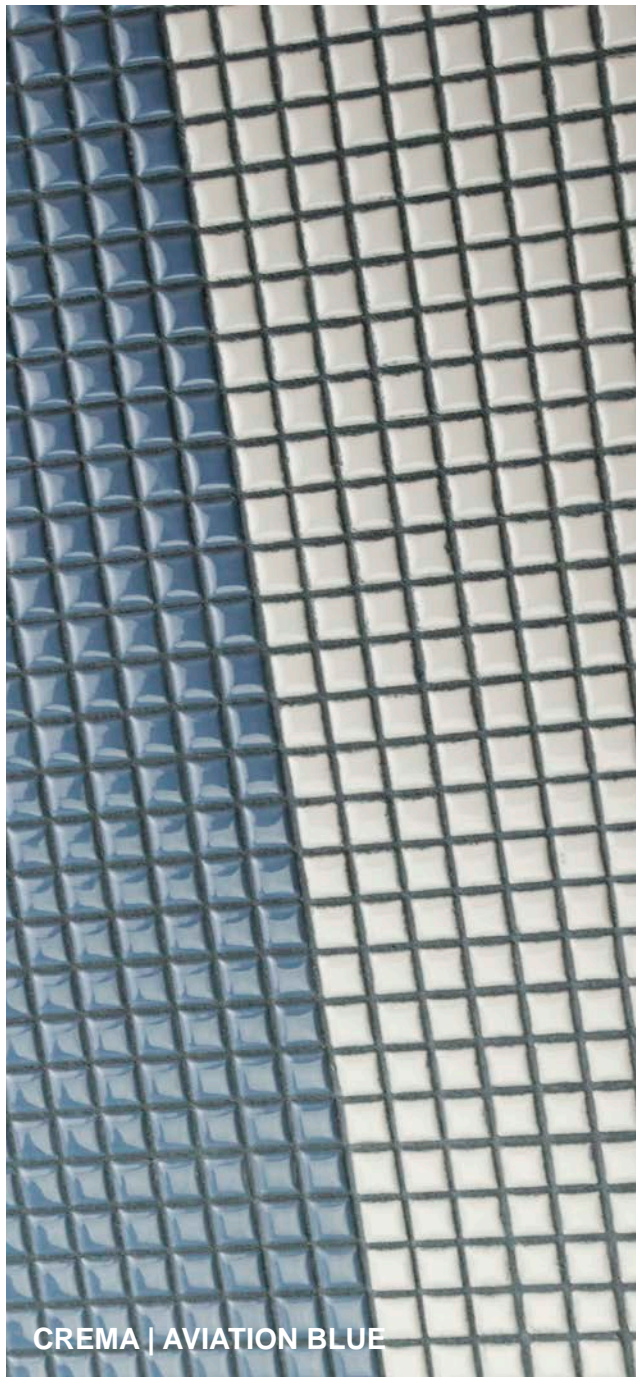


28 Colors | 1 Size | 1 Finish

# DIVA CERAMIC MOSAIC

NEMO  
TILE + STONE





**NEMO**  
TILE + STONE

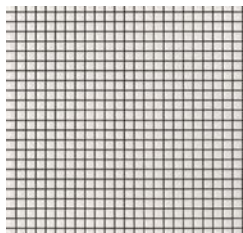
**DIVA**  
CHROMATIC LOOK CERAMIC MOSAIC



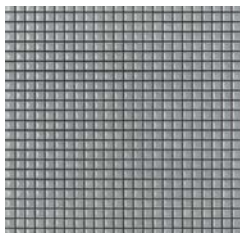
# DIVA

V1 Variation | Gloss Finish

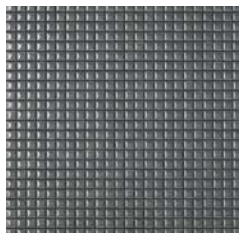
The accentuated rounded edges and the high gloss finishing of the glazed surface takes in light and reflects it to make “Diva” a mosaics collection unique for its colour intensity.



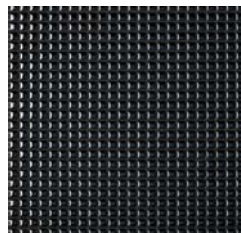
Snow



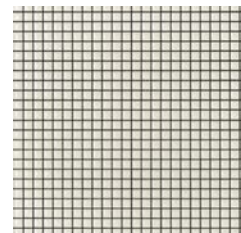
Light Grey



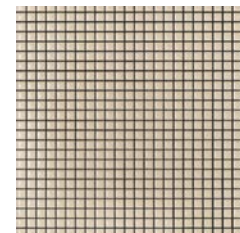
Dark Grey



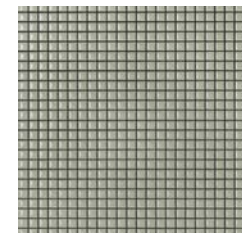
Black



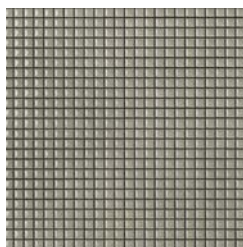
Cream



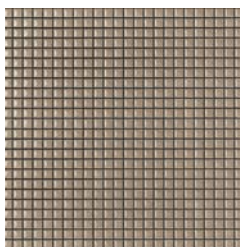
Ivory



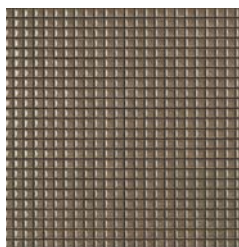
Linen



Taupe



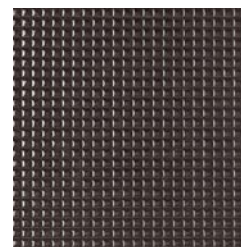
Sand



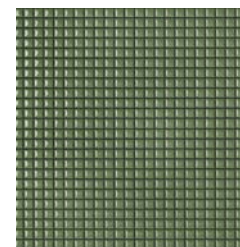
Havana



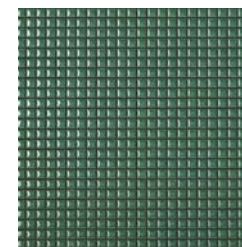
Brown



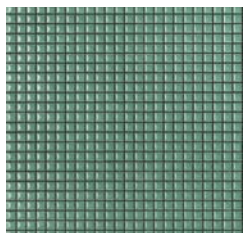
Coffee



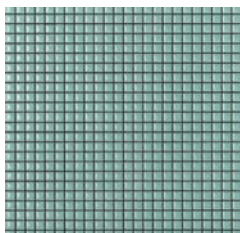
Olive



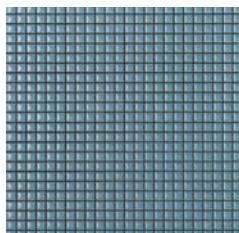
Emerald



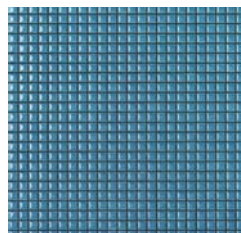
Jade



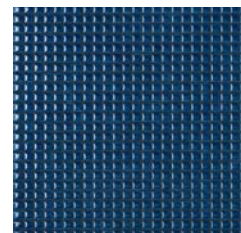
Aquamarine



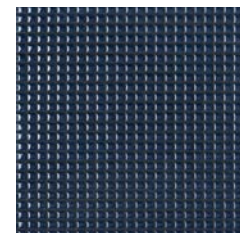
Aviation Blue



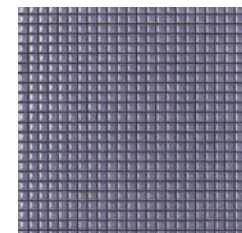
Turquoise



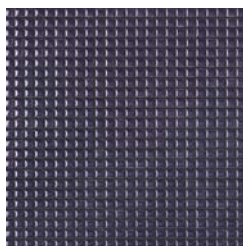
Royal Blue



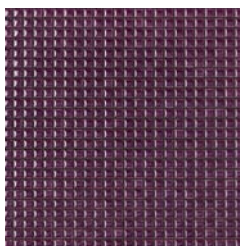
Dark Blue



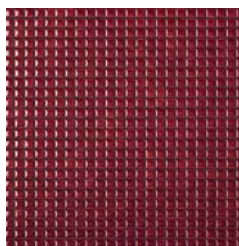
Violet



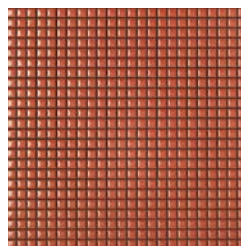
Plum



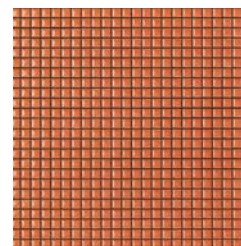
Purple



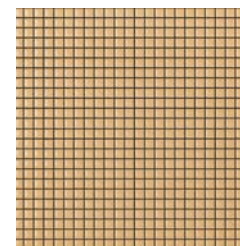
Burgandy



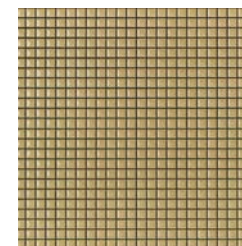
Coral



Orange

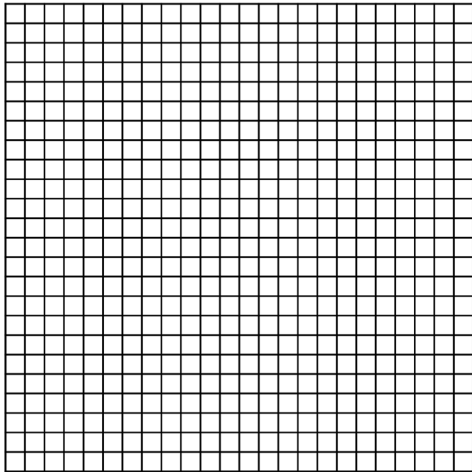


Orange Yellow



Mustard

# Sizes



1/2" x 1/2" Mosaic on 12" x 12" Mesh Sheet



# Technical Information

SURFACE DIMENSIONS AND QUALITIES	STANDARD	TOLERANCES	RESULTS
NET MOUNTED / SIDES	ISO 10545-2	SIDES	± 0.2% ± 4%
SURFACE QUALITIES	ISO 10545-2	< 95%	< 95%
STRAIGHTNESS OF EDGES	ISO 10545-2	± 0.5%	± 0.4%
SQUARENESS	ISO 10545-2	± 0.6%	± 0.4%
FLATNESS	ISO 10545-2	± 0.5%	± 0.4%
PHYSICAL PROPERTIES		REQUIRED CONDITIONS	
WATER MASS ABSORBED IN %	ISO 10545-3 ASTM C373	0.5% < E ≤ 3% APPENDICE H	≤ 1%
BREAKING STRENGTH IN N BREAKING STRENGTH IN LBS.	ISO 10545-4 ASTM C648	700 MIN. APPENDICE H ≥ 250 LB	> 1800 > 250 LB
BENDING STRENGTH IN N/mm²	ISO 10545-4	30 MIN. APPENDICE H	> 50 N/mm²
IMPACT RESISTANCE	ISO 10545-5	TESTING METHOD AVAILABLE	> 0.6 (APPENDICE P)
ABRASION RESISTANCE	ISO 10545-7	INDICATED BY PRODUCER	SEE COLOR NOTES
COEFFICIENT OF LINEAR THERMAL EXPANSION	ISO 10545-8	TESTING METHOD AVAILABLE	< 7x10 <sup>-6</sup> /°C
THERMAL SHOCK RESISTANCE	ISO 10545-9 ASTM C484	TESTING METHOD AVAILABLE	GUARANTEED
MOISTURE EXPANSION	ISO 10545-10	TESTING METHOD AVAILABLE	< 0.04%
CRAZING RESISTANCE	ISO 10545-11 ASTM C424	REQUIRED	GUARANTEED
FROST RESISTANCE	ISO 10545-12 ASTM C1026	REQUIRED	GUARANTEED
COEFFICIENT OF FRICTION (SLIPPERINESS)	B.C.R.A.	> 0.40	
COEFFICIENT OF FRICTION	DIN 51130	INDICATED BY PRODUCER	ON REQUEST
COEFFICIENT OF FRICTION (INCLUDING INCLINE)	DIN 51097	INDICATED BY PRODUCER	
CHEMICAL PROPERTIES		REQUISITES	
RESISTANCE TO CHEMICAL PRODUCTS (HOUSEKEEP- ING AND SWIMMING POOL ADDITIVES)	ISO 10545-13	GB MIN.	GB MIN.
RESISTANCE TO DILUTED ACID AND ALKALI SOLUTIONS	ISO 10545-13	INDICATED BY PRODUCER	GLB MIN.
RESISTANCE TO HIGHLY CONCENTRATED ACID AND ALKALI SOLUTIONS	ISO 10545-13	TESTING METHOD AVAILABLE	ON REQUEST
STAIN RESISTANCE	ISO 10545-14 ASTM C1378	CLASS 3 MIN.REQUIRED	3 MIN. (APPENDICE P) GUARANTEED
LEAD AND CADMIUM RELEASED	ISO 10545-15	TESTING METHOD AVAILABLE	ON REQUEST
RESISTANCE OF COLOURS TO SUNLIGHT	DIN 51094	NOT PROVIDED	GUARANTEED
FIRE RESISTANCE		DECISION 96/603/CE	CLASS A1